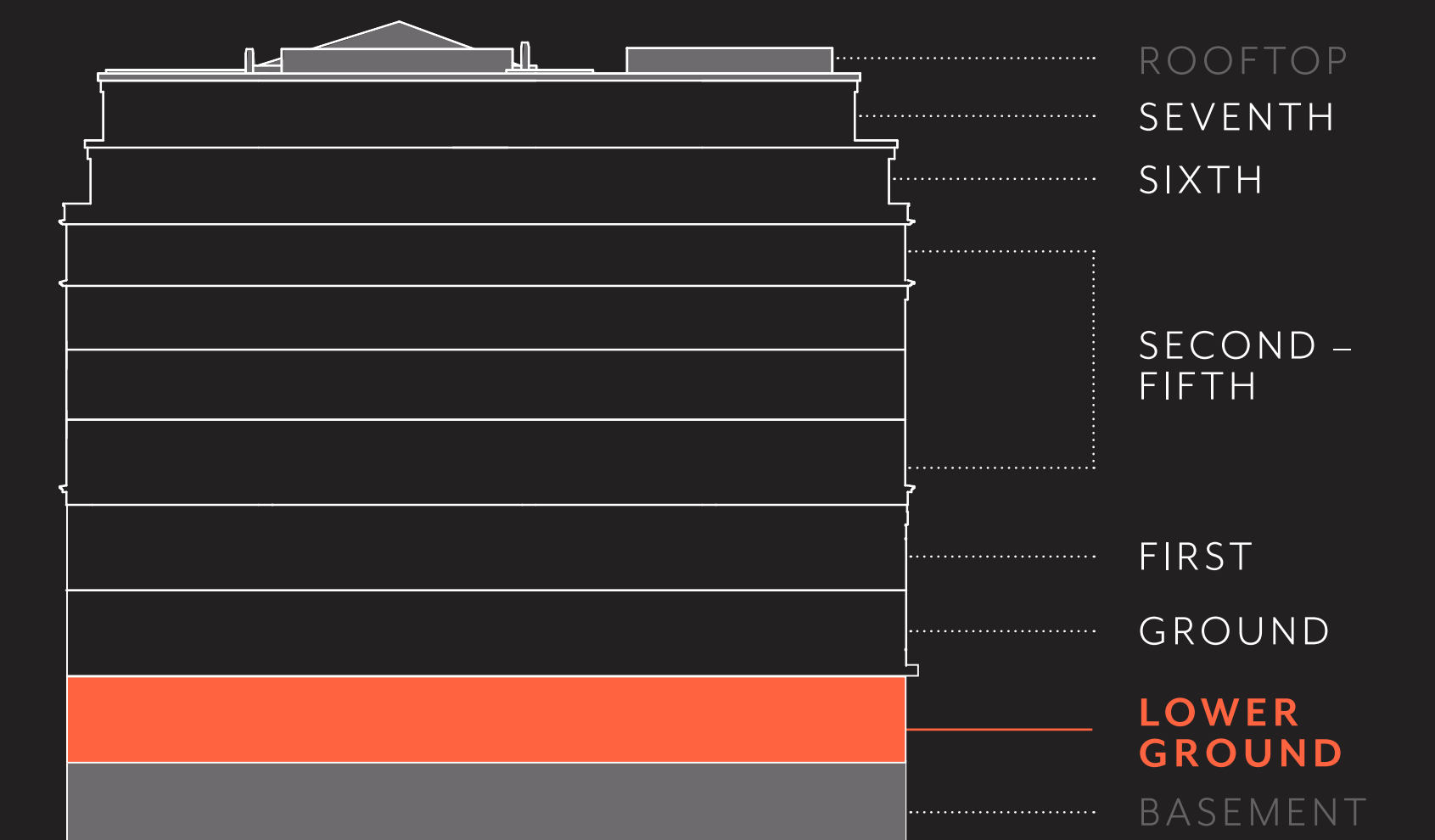
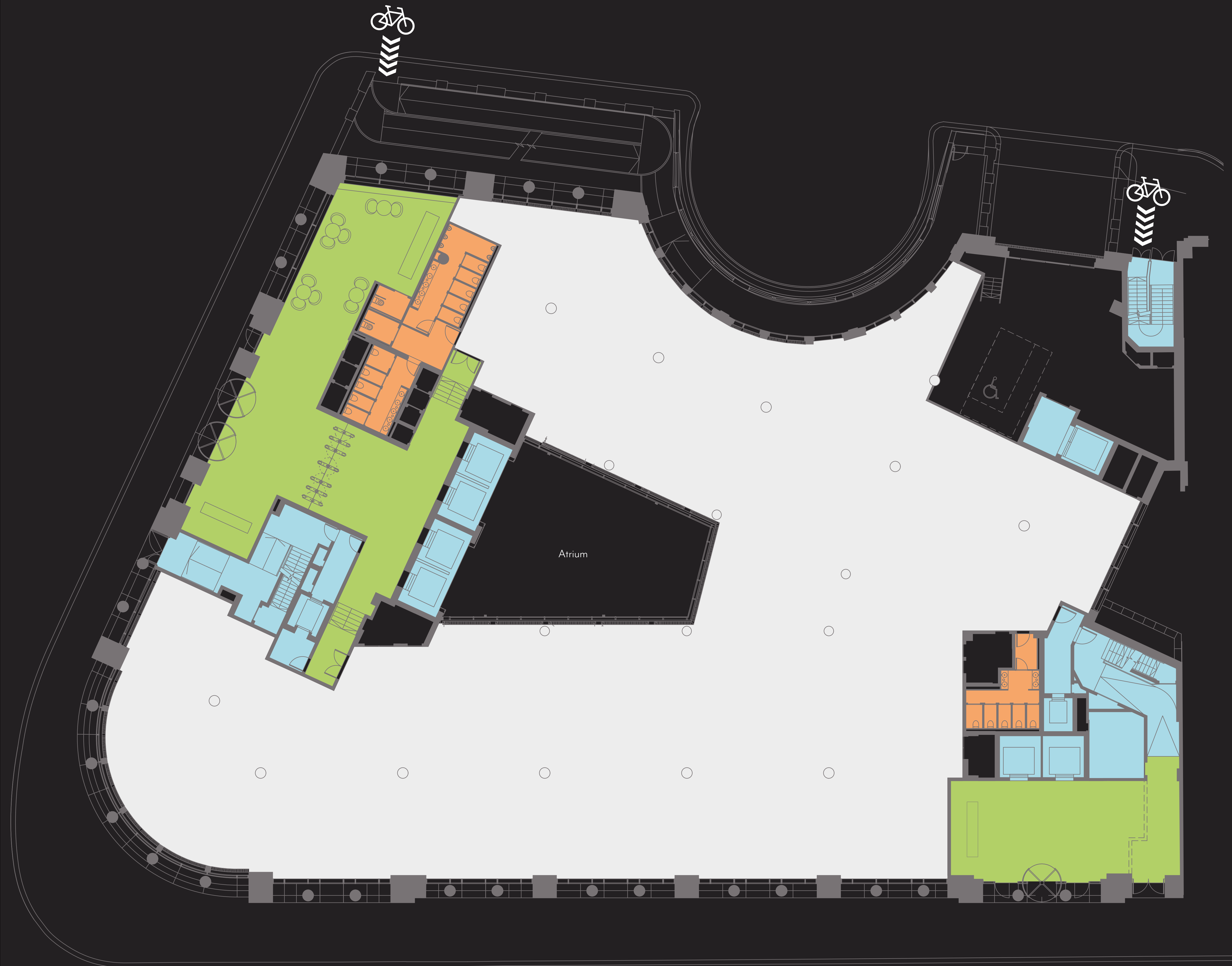


Lower Ground

24,165 SQ FT
2,245 SQ M

- Office
- WCs
- Stairwells / Lifts

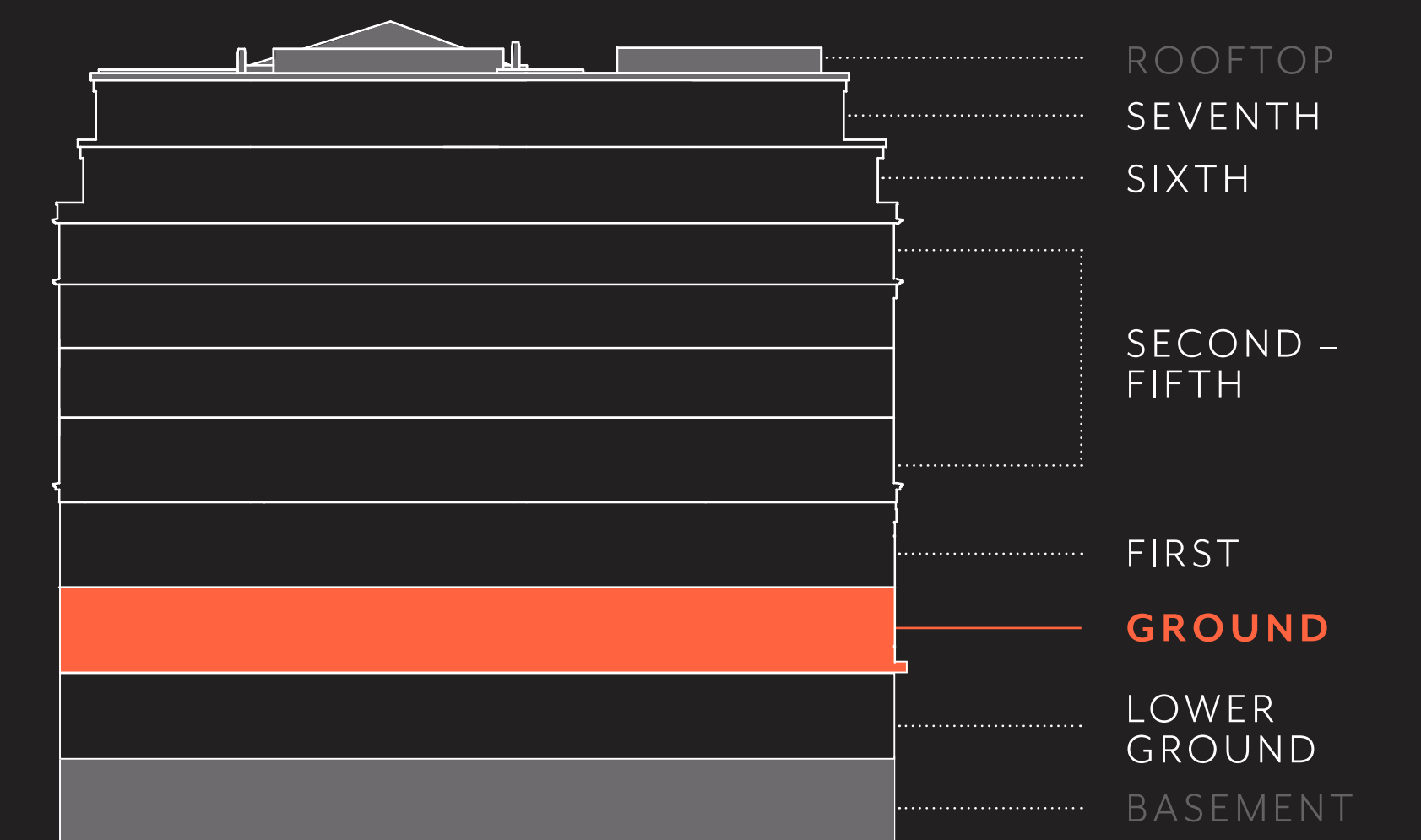




Ground

15,741 SQ FT
1,462 SQ M

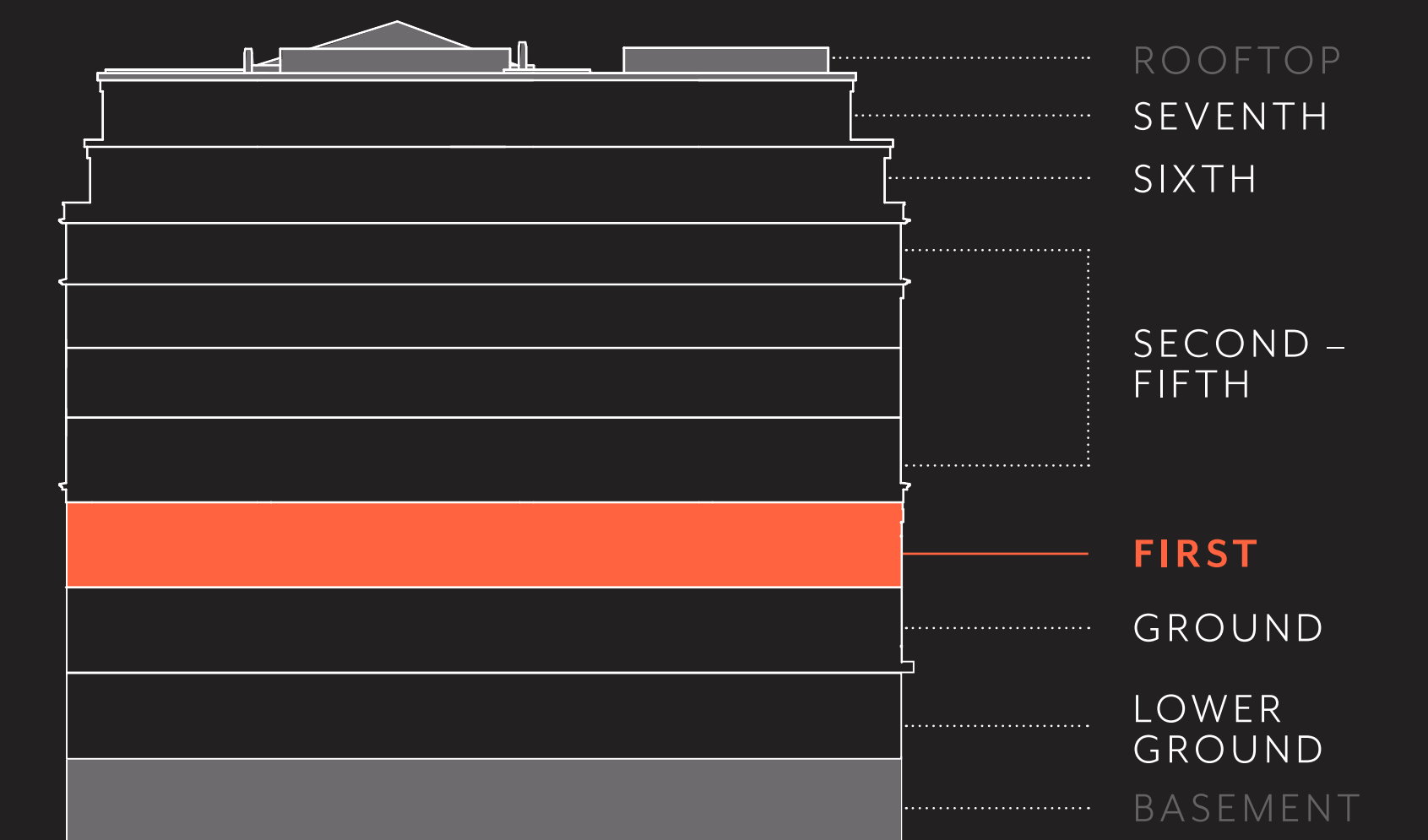
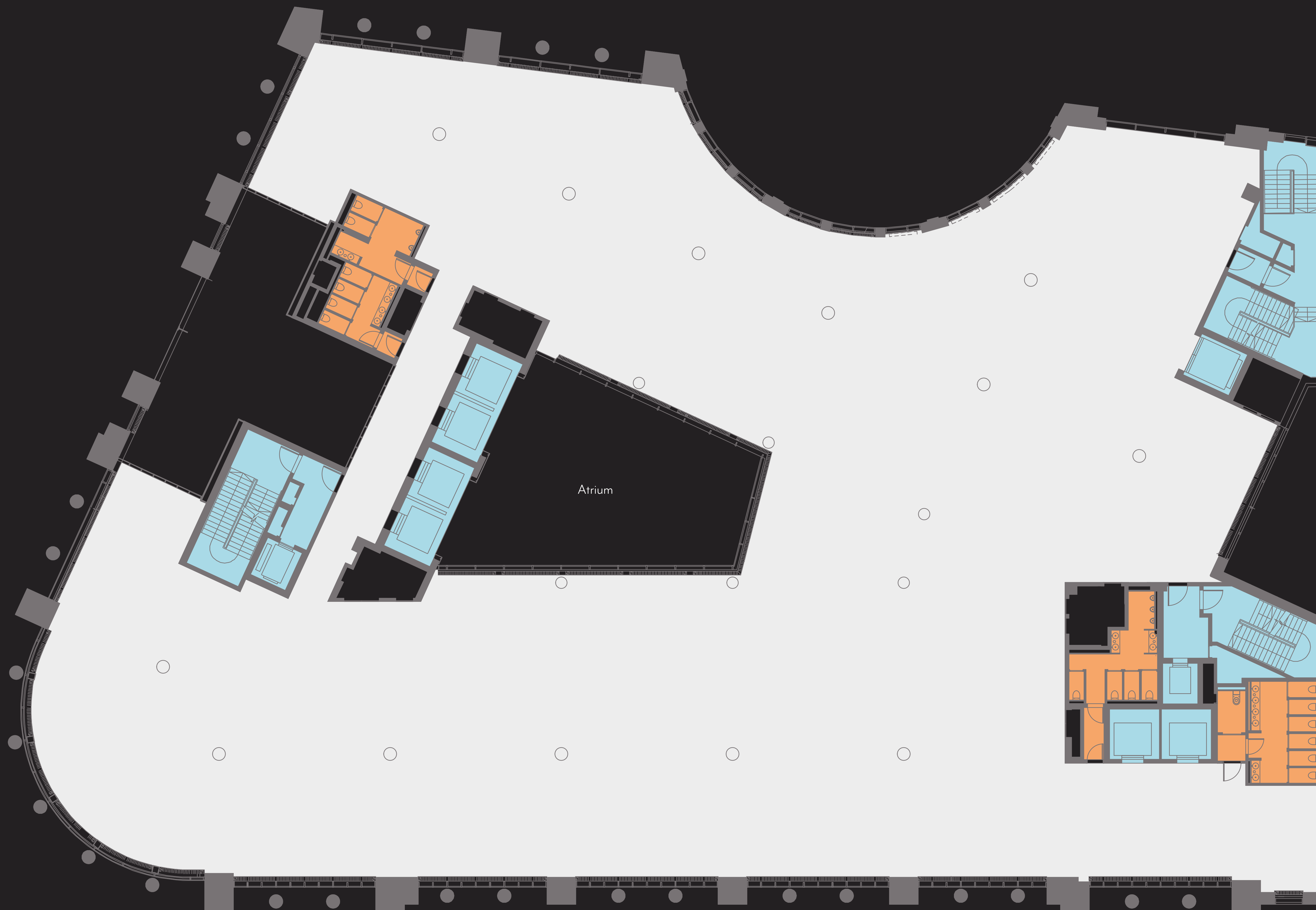
- Office
- Reception
- WCs
- Stairwells / Lifts



First

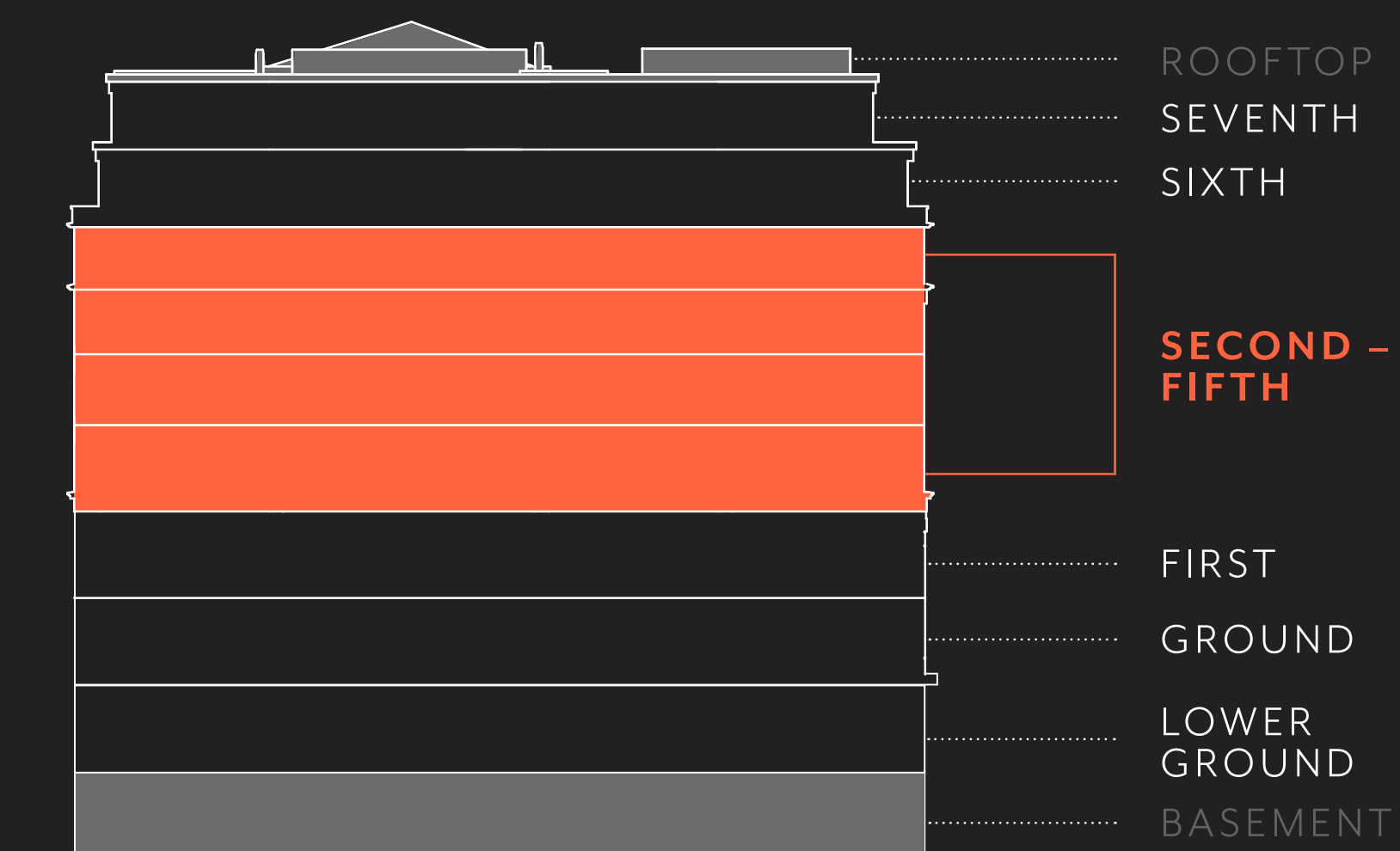
19,859 SQ FT
1,844 SQ M

- Office
- WCs
- Stairwells / Lifts



Second – Fifth

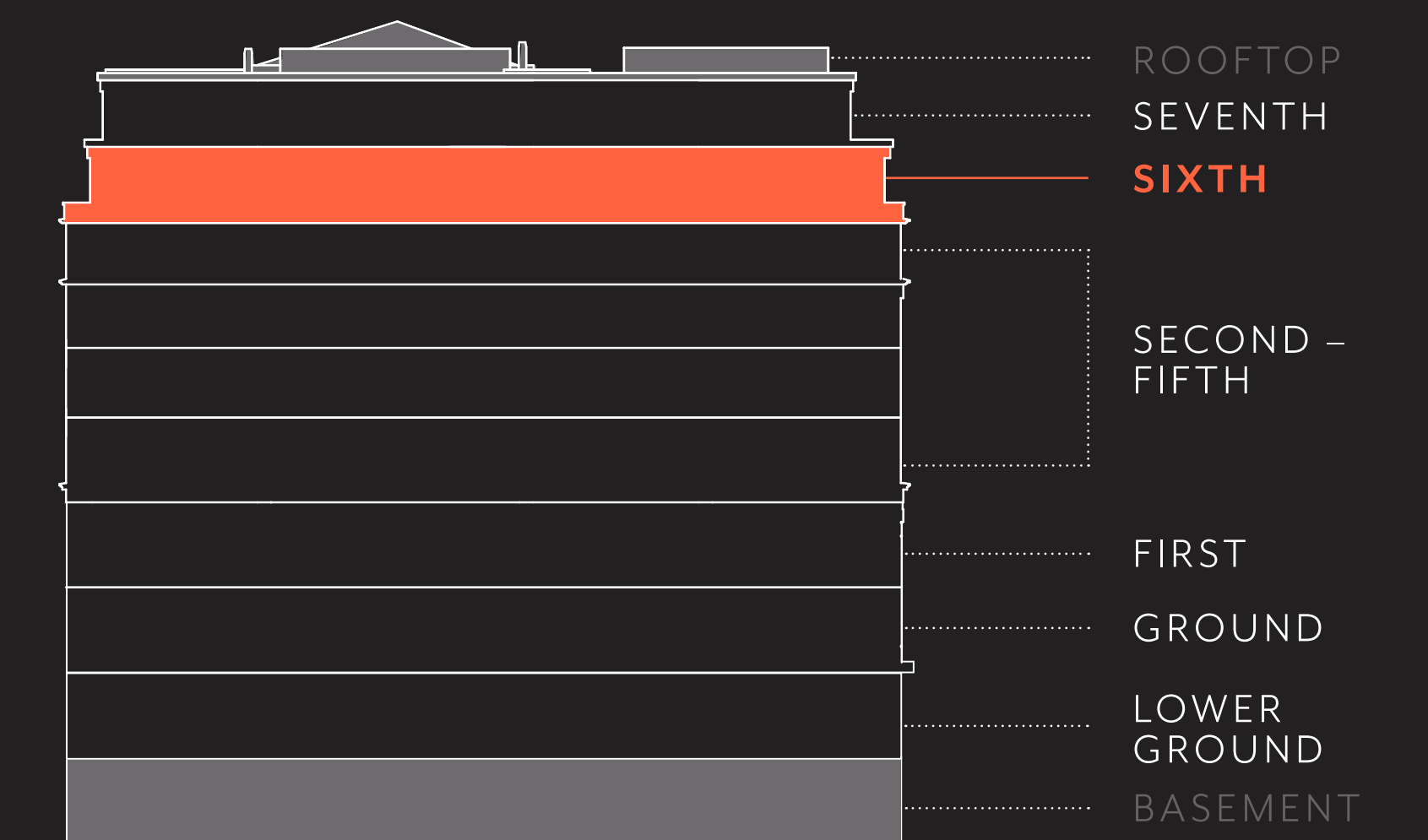
- Office
- WCs
- Stairwells / Lifts



Sixth

19,052 SQ FT
1,769 SQ M

- Office
- WCs
- Stairwells / Lifts



Seventh

8,299 SQ FT
771 SQ M

- Office
- Terrace
- WCs
- Stairwells / Lifts

